

SUNWARD



## SWL/SWTL Series Skid Steer Loader

### ■ SUNWARD INTELLIGENT EQUIPMENT CO.,LTD.

Add: Sunward Intelligent Industrial Park, Xingsha, Changsha, 410100, China.  
Tel: (0086-731) 83572 828 E-mail: international@sunward.com.cn  
Web: www.sunward.com.cn

### ■ SUNWARD N.A.LLC

Add: 3092 N 2000 W Farr West, Utah, USA, 84404  
Office: 801 782 1407  
Cell: 651 210 3449  
E-mail: na@sunward.cc

Please read the manual book and maintenance book before operation, changes are periodically added to the information, and Sunward may change the products or services described in this book at any time without announcement. All rights of this manual book reserve to Sunward. SUNWARD Internal Use Only

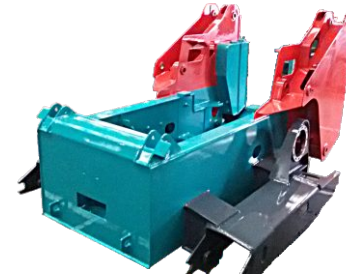
SWL&SWTL EN 2016-10



SWL/SWTL skid steer loader is SUNWARD new generation of compact multi-function construction machine, which combines technology of mechanic, electrical, hydraulic. Each performance index reaches international advanced level. Its main features include compact structure, flexible performance, convenient operation, high efficiency, multifunction and easy maintenance. It's particularly suitable for urban infrastructure, construction of road and building, workshop, warehouse, dock, ship deck and narrow space like vessel cabin or other places require frequently transformation of working content. By changing work attachment, Skid steer loader can execute various task such as loading, lifting, digging, boring, breaking, Grapping, earth loosening, road cleaning and pavement works.



### ● Innovative Monolithic Structure



- ◆ Fuel tank and chassis was designed as a integral structure that makes machine more compact and durable.
- ◆ Rectangular steel tube structure of boom, good rigidity and high strength.

### ● Closed Static Hydraulic Traveling System



- ◆ Static hydraulic traveling system, equipped by advanced anti-overloading hydraulic device, large-torque motor, big driving force, with self-brake function, safe and reliable.

### ● Original Imported Engine



- ◆ Customized engine from origin import, strong power, high reliability, low noise, environment friendly, meets emission standard of different regions.



### ● Higher Lifting Height



- ◆ Optimized structure designation enable machine to have higher lifting height than other brand.

### ● Unique Vertical Lifting Working Unit



- ◆ Unique vertical lifting working unit, which contains bigger lifting capacity, higher lifting height and longer discharge distance.

### ● Auto-leveling System

Standard hydraulic horizontally, lift the movable boom ensure invariant bucket angle with the ground, to prevent falling material, reduce the labor intensity of the operating personnel.



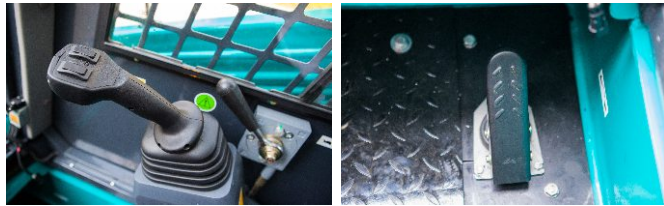




- **Pilot Handle Operation**
- ◆ Proportional control pilot joystick operation, simple, labor saving, agile.

● **Double Accelerator Control**

- ◆ Adapt double accelerator control, hand accelerator for constant power in workplace, pedal accelerator for bucket loading.



- ◆ Wide space and good vision, easy in and out, all of button and switch is reachable.

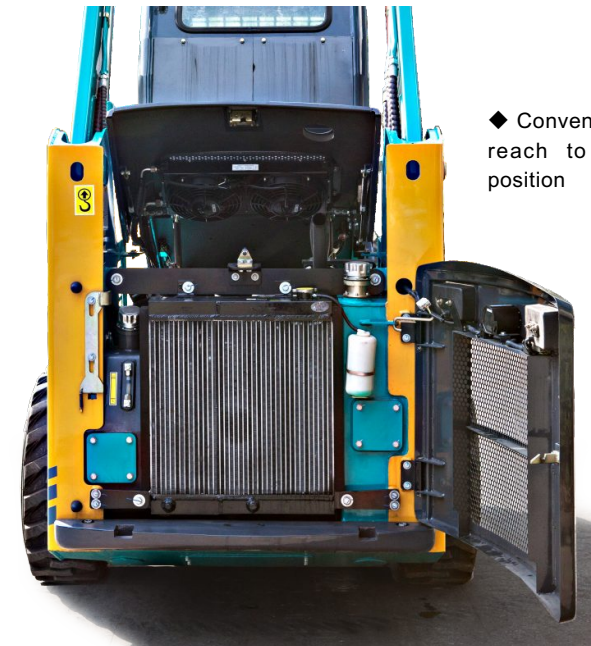
- ◆ Equipped with heater and air conditioning, choose appropriate configuration depending on different regions.



- Open the rear cover door by 90°
- Turn up 60° cover plate of engine
- 30° front tilting cab
- All-direction maintenance space

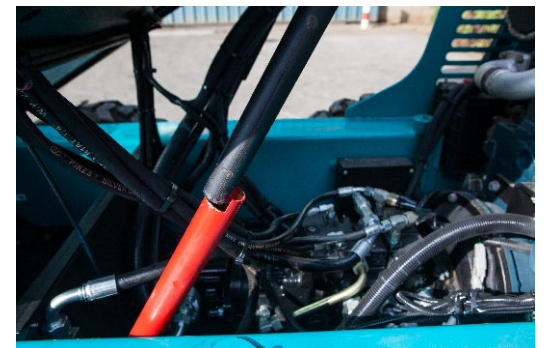


- ◆ Conform to FOPS/ROPS standard cab structure
- ◆ Three-level electric starting protection system
- ◆ Complete warning beacon, warning signal and reverse horn
- ◆ Working unit urgency declining function
- ◆ Rear window detachable



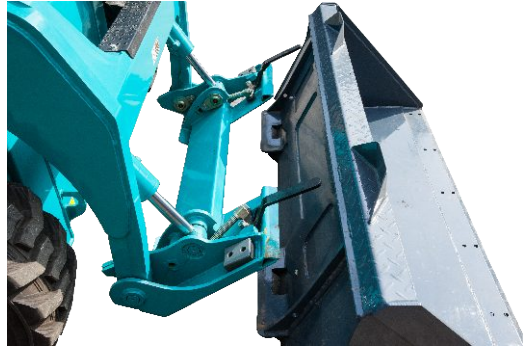
- ◆ Convenient maintain and reach to every repairing position

- ◆ Safety lever locked when lifts boom, cab, cover plate to a max position

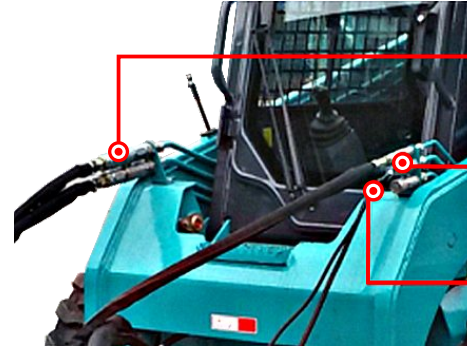




### Standard quick coupler

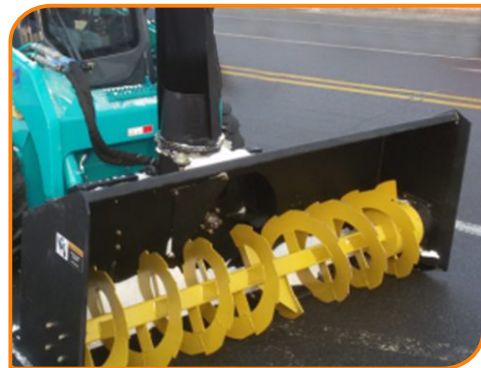


Adapt to international common quick coupler, fast change various kinds attachment. Majority of attachments can be used in Sunward skid steer loader.



High flow  
Normal flow  
Electric control

- High flow system is optional. Skid steer loader enlarge flow rate by interflow of two pumps, which meets lots of attachment required by high flow, like cold planer etc.



Snow Blower



Cold Planer



Ditcher



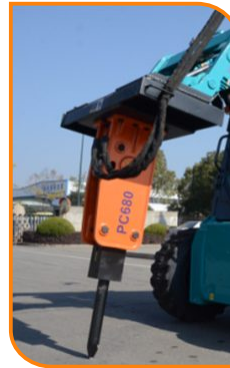
Compact



Mixer



Auger



Breaker



4 in 1 bucket



Delver



Snow Blade



Earthquake relief in Wenchuan



In Xinjiang



Work in Iran



Sweeping in Beijing



Construction in Changsha



Construction in Russia



Breaking in Belgium



Work in Italy



In U.S.A

### STANDARD CONFIGURATION

- Standard quick coupler, standard bucket, cabin, safety handrail, adjustable seat, centralized display panel, auto-levelling, ordinary flow, front working lights, warning light, reversing warning, horn, double accelero-control, etc.

### OPTIONAL CONFIGURATION

- High flow systems, side windows, closed cab, heater, air conditioning, external power supply, counterweight, attachments electronic control system, rear working lights, etc.

### ATTACHMENTS

- Bucket, 4 in 1 bucket, fork, manure fork, rod string, sieve shovel, deicer, pushing snow blade, simple delver, grasping wooden bucket, dozer blade, hydraulic breaker, bevel cleaner, closed cleaner, ditch digger, snow blower, blender, auger, planer, vibratory road, weed extractor, disc trencher, move the tree cutter, hedge trimmer, wrecker, rotary cultivator, hundreds of optional attachments etc.



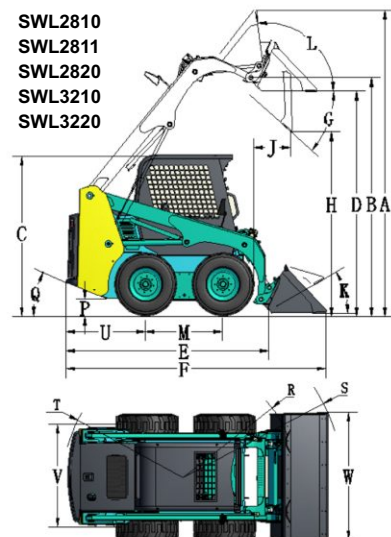
**SWL/SWTL Skid Steer Loader Series Product Size Parameters**

**SWL/SWTL Skid Steer Loader Series Product Performance Parameters**

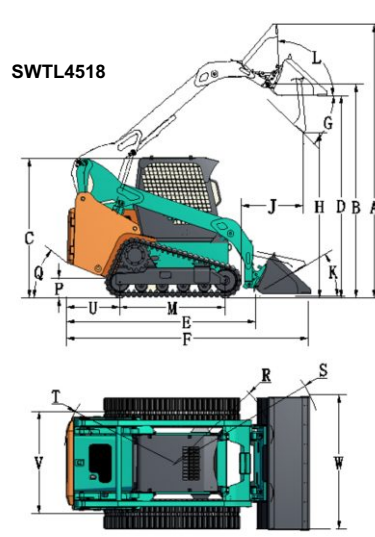
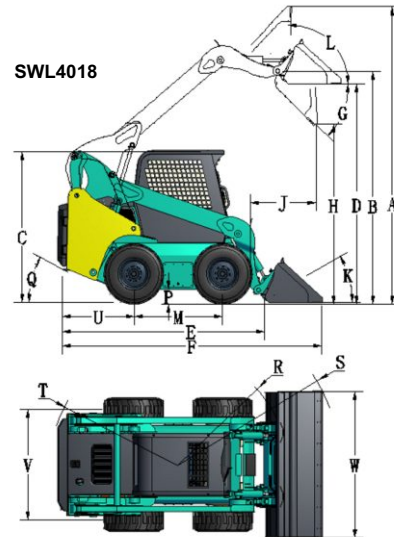
| Datas                |              | Model   | SWL2810         | SWL2811         | SWL2820         | SWL3210         | SWL3220         | SWL4018         | SWTL4518        |       |
|----------------------|--------------|---|-----------------|-----------------|-----------------|-----------------|-----------------|-----------------|-----------------|-------|
| Dimension(LxBxH)     |              | in  | 128.4x63.0x79.4 | 130.6x63.0x79.3 | 130.6x63.0x79.3 | 143.7x72.0x81.4 | 143.7x72.0x81.4 | 145.1x79.3x82.6 | 144.1x79.3x83.9 |       |
| OPERATING PARAMETERS | A            | Max. operating altitude                       | in              | 151.6           | 151.6           | 151.6           | 158.3           | 158.3           | 161.7           | 161.7 |
|                      | B            | Height to bucket hinge pin                    | in              | 118.2           | 118.2           | 118.2           | 123.0           | 123.0           | 126.4           | 126.4 |
|                      | C            | Height to top of cab                          | in              | 79.4            | 79.3            | 79.3            | 81.4            | 81.4            | 82.6            | 83.9  |
|                      | D            | Height to bottom of level bucket              | in              | 111.6           | 111.6           | 111.6           | 116.1           | 116.1           | 119.4           | 119.4 |
|                      | E            | Overall length without attachment             | in              | 97.4            | 102.5           | 102.5           | 116.1           | 116.1           | 115.2           | 113.7 |
|                      | F            | Overall length with standard bucket           | in              | 128.4           | 130.6           | 130.6           | 143.7           | 143.7           | 145.1           | 144.1 |
|                      | G            | Max. height of the unloaded angle             | °               | 42              | 42              | 42              | 43              | 43              | 43              | 43    |
|                      | H            | Dumping height                                | in              | 91.3            | 91.3            | 91.3            | 94.3            | 94.3            | 96.6            | 96.6  |
|                      | J            | Dumping reach                                 | in              | 18.7            | 18.7            | 18.7            | 24.6            | 24.6            | 34.5            | 36.4  |
|                      | K            | Bucket on the ground of the flip angle        | °               | 30              | 30              | 30              | 30              | 30              | 30              | 30    |
|                      | L            | Bucket at the highest flip angle              | °               | 97              | 97              | 97              | 93              | 93              | 92              | 92    |
|                      | M            | Wheelbase                                     | in              | 38.9            | 38.9            | 38.9            | 43.9            | 43.9            | 48.5            | 63.0  |
|                      | P            | Ground clearance                              | in              | 7.5             | 7.5             | 7.5             | 8.1             | 8.1             | 8.1             | 9.3   |
|                      | Q            | Angle of departure                            | °               | 25              | 25              | 25              | 27              | 27              | 28              | 36    |
|                      | R            | Without the attachments before turning radius | in              | 46.0            | 48.6            | 48.6            | 52.8            | 52.8            | 53.7            | 56.7  |
|                      | S            | Before turning radius                         | in              | 76.9            | 76.9            | 76.9            | 85.8            | 85.8            | 88.4            | 90.1  |
|                      | T            | After turning radius                          | in              | 60.4            | 60.3            | 60.3            | 66.9            | 66.9            | 68.9            | 65.9  |
|                      | U            | Tail length                                   | in              | 37.8            | 40.2            | 40.2            | 44.2            | 44.2            | 41.9            | 31.6  |
|                      | V            | Wheel spacing (track center distance)         | in              | 50.9            | 50.9            | 50.9            | 58.1            | 58.1            | 59.1            | 60.2  |
| W                    | Bucket width | in  | 63.0            | 63.0            | 63.0            | 72.0            | 72.0            | 79.3            | 79.3            |       |

| Datas                 |                            | Model                      | SWL2810                                 | SWL2811                    | SWL2820                 | SWL3210                | SWL3220                 | SWL4018                            | SWTL4518                                   |
|-----------------------|----------------------------|----------------------------|---|----------------------------|-------------------------|------------------------|-------------------------|------------------------------------|--|
| PERFORMANCE           | Total weight               | lb                         | 6134                                    | 6244                       | 6244                    | 7392                   | 7392                    | 8826                               | 10062                                      |
|                       | Loading capacity           | lb                         | 1655                                    | 1655                       | 1655                    | 2207                   | 2207                    | 3310                               | 3310                                       |
|                       | Tipping load               | lb                         | 3310                                    | 3310                       | 3310                    | 4413                   | 4413                    | 6620                               | 9455                                       |
|                       | Bucket breakout force lift | lb                         | 4413                                    | 4413                       | 4413                    | 5472                   | 5472                    | 7613                               | 7613                                       |
|                       | Boom breakout force lift   | lb                         | 4192                                    | 4192                       | 4192                    | 5362                   | 5362                    | 6620                               | 6620                                       |
|                       | Max. traveling speed       | mph                        | 8.5                                     | 8.1                        | 8.1                     | 7.8                    | 7.8                     | 6.2/12.4 (Double speed)            | 4.3/6.8 (Double speed)                     |
|                       | Bucket capacity            | ft <sup>3</sup>            | 14.1                                    | 14.1                       | 14.1                    | 18.7                   | 18.7                    | 23.6                               | 23.6                                       |
|                       | ENGINE                     | Brand                      |   | Yanmar                     | Xinchai                 | KUBOTA                 | KUBOTA                  | KUBOTA                             | KUBOTA                                     |
| Model                 |                            |                            | 4TNV84T                                 | C490BG                     | V2403-M-T               | V3300DI                | V3307-DI-T              | V3800DI-T                          | V3800DI-T                                  |
| Type                  |                            |                            | 4-cylinder, water-cooled, diesel engine |                            |                         |                        |                         |                                    |  |
| Emission standards    |                            |                            | EPA Tier2/ EU Stage II                  | China Stage II             | EPA Tier4/ EU Stage III | EPA Tier2/ EU Stage II | EPA Tier4/ EU Stage III | EPA Tier3/ EU Stage III            | EPA Tier3/ EU Stage III                    |
| Power                 |                            | hp                         | 53.5                                    | 49.3                       | 55.9                    | 73.6                   | 74.3                    | 99.2                               | 99.2                                       |
| Max. torque           |                            | lb·ft                      | 118.4                                   | 115.1                      | 120.7                   | 180.0                  | 195.5                   | 239.7                              | 239.7                                      |
| TRANSMISSION SYSTEM   |                            | Type                       |   | Hydrostatic closed circuit |                         |                        |                         |                                    |  |
|                       | Main pump                  |                            | 2xVariable displacement piston pump     |                            |                         |                        |                         |                                    |  |
|                       | Motor                      |                            | 2xRadial piston quantitative motor      |                            |                         |                        |                         | 2xRadial piston two variable motor | 2xRadial piston two variable motor+Reducer |
|                       | HYDRAULIC SYSTEM           | Type                       |   | Throttling system          |                         |                        |                         |                                    |  |
| Pump                  |                            |                            | Gear pump                               |                            |                         |                        |                         |                                    |  |
| Max. flow             |                            | gpm                        | 17.8+8.3                                | 17.8                       | 17.8+8.3                | 21.1+11.6              | 21.1+11.6               | 23.8+18.2                          | 21.1+11.6                                  |
| Max. pressure         |                            | psi                        | 3045                                    | 3045                       | 3045                    | 3045                   | 3045                    | 3045                               | 3045                                       |
| Control valve         |                            |                            | Three joint multi-way valve             |                            |                         |                        |                         |                                    |  |
| Control mode          |                            | ISO model of pilot control |   |                            |                         |                        |                         |                                    |  |
| ELECTRICAL SYSTEM     | Starting motor             | V/kW                       | 12/2.3                                  | 12/3.0                     | 12/2.0                  | 12/3.0                 | 12/3.0                  | 12/3.0                             | 12/3.0                                     |
|                       | Alternator                 | V/A                        | 12/55                                   | 12/40                      | 12/40                   | 12/45                  | 12/80                   | 12/80                              | 12/80                                      |
|                       | Battery                    | Ah                         | 80                                      | 80                         | 80                      | 100                    | 100                     | 100                                | 100  |
| FILLING QUANTITY      | Hydraulic oil tank         | gal                        | 13.2                                    | 9.2                        | 9.2                     | 9.2                    | 9.2                     | 17.2                               | 17.2                                       |
|                       | Fuel oil tank              | gal                        | 18.5                                    | 19.8                       | 19.8                    | 22.5                   | 22.5                    | 23.8                               | 23.8                                       |
|                       | Sprocket oil tank          | gal                        | 6.3                                     | 6.3                        | 6.3                     | 6.9                    | 6.9                     | 7.9                                | ---  |
|                       | Engine oil                 | gal                        | 2.0                                     | 1.7                        | 2.5                     | 3.5                    | 2.9                     | 3.5                                | 3.5  |
|                       | Sprocket oil tank          | gal                        | 2.0                                     | 2.4                        | 2.1                     | 2.2                    | 2.2                     | 2.6                                | 2.6  |
| RUNNING CONFIGURATION | Tire size                  |                            | 10-16.5                                 | 10-16.5                    | 10-16.5                 | 12-16.5                | 12-16.5                 | 12-16.5-12RP                       | ---  |
|                       | Track size                 |                            | ---                                     | ---                        | ---                     | ---                    | ---                     | ---                                | 450x84x57                                  |

**SWL Series**



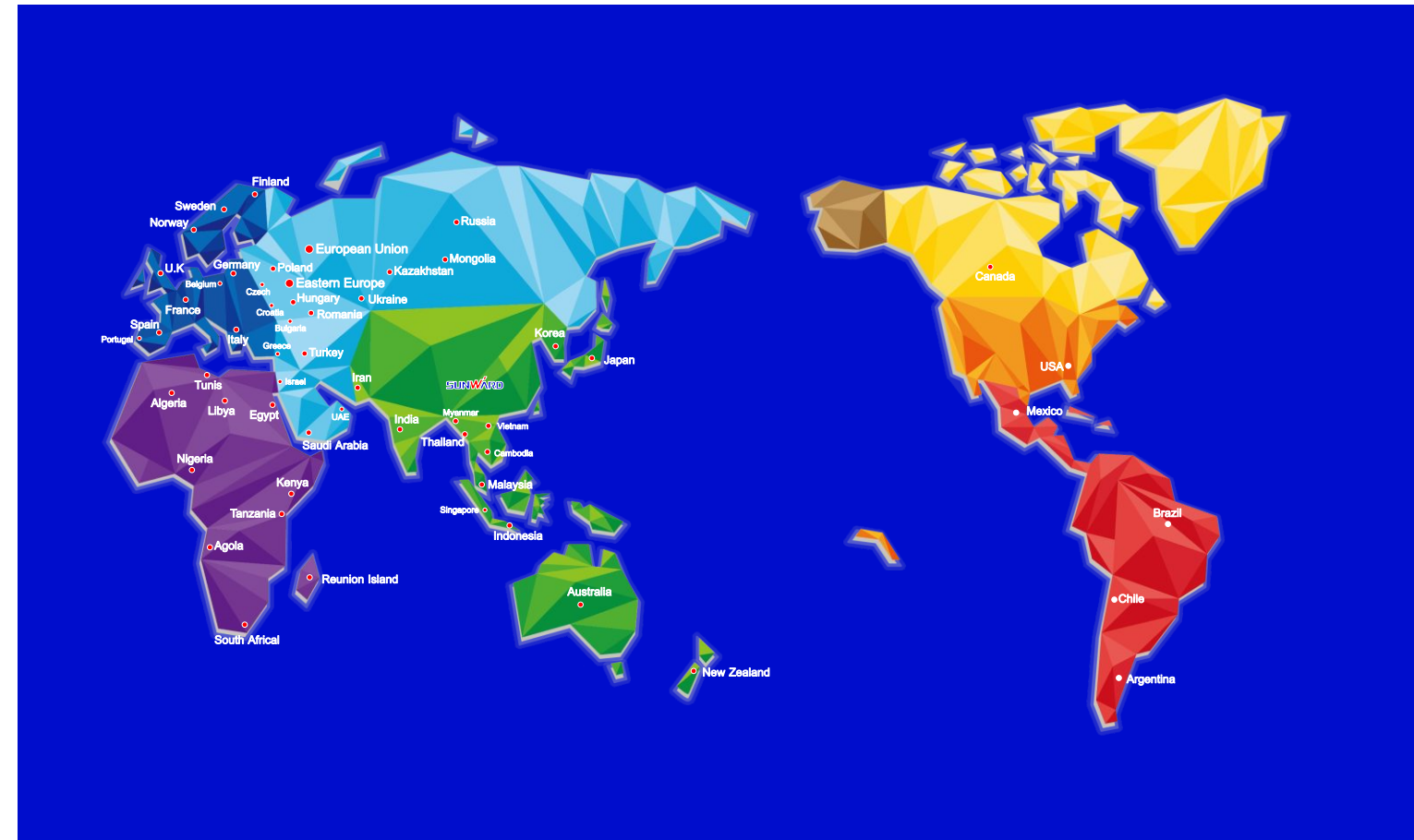
**SWTL Series**







Worldwide Network for Sales and Service



**Asia**

- Combia
- India
- Indonesia
- Iran
- Japan
- Korea
- Malaysia
- Mongolia
- Myanmar
- Saudi Arabia
- Singapore
- Thailand
- U.A.E
- Vietnam

**Europe**

- European Union
- Eastern Europe
- Russia
- Turkey
- Ukraine

**America**

- Argentina
- Brazil
- Canada
- Chile
- Mexico
- U.S.A

**Oceania**

- Australia
- New Zealand

**Africa**

- Algeria
- Egypt
- Libya
- Nigeria
- Reunion Island
- South Africa
- Tanzania
- Tunis

**CIS**

- Five Countries of Central Asia
- Kazakhstan
- Russia
- Turkmenistan
- Ukraine
  
- The Republic of Azerbaijan
- The Republic of Belarus
- The Republic of Kyrgyz
- The Republic of Tajikistan
- The Republic of Uzbekistan